

/ Perfect Welding / Solar Energy / Perfect Charging



SHIFTING THE LIMITS



# SETTING UP THE LOCAL FTP SERVER

Training document

EN



© Fronius International GmbH  
Version 1 09/2015 TO  
Solar Energy / TechSupport International

Fronius reserves all rights, in particular rights of reproduction, distribution and translation.

No part of this work may be reproduced in any way without the written consent of Fronius. It must not be saved, edited, reproduced or distributed using any electrical or electronic system.

You are hereby reminded that the information divulged during the training course or published in this manual, despite exercising the greatest of care in its preparation, is subject to change and that neither the author nor Fronius can accept any legal liability.

Gender-specific wording refers equally to female and male form.

# WELCOME

We welcome you to the training "Setting up the local FTP server".  
This document is for your reference and will help you should you have any questions later.

The aims of this training are as follows:

- / Configuring a local FTP server for the receipt of the PV plant data via the FTP Push function of the Fronius Datamanager
- /

This guide describes how you install and configure an FTP server on your computer using the program "FileZilla Server version 0.9.31 beta". "FileZilla Server" is an Open Source program, which you can download free from the internet (see <http://filezilla-project.org>). The steps for configuring the FTP server are specifically described for FileZilla Server. Other FTP server software for use on a local computer or on an internet server is configured similarly.

Additionally, this guide describes how you configure and test the FTP Push function of the Fronius Datamanager. The second part of this guide describes how you configure the Fronius Datamanager and is valid for every FTP server.

We wish you an enjoyable and successful training!

Expert Team / TSI  
Master Trainer International  
Thomas Obermüller

For further information, please contact:  
TechSupport International, [pv-support@fronius.com](mailto:pv-support@fronius.com), +43 7242 241 5670

# TABLE OF CONTENTS

<b>1</b>	<b>Requirements .....</b>	<b>6</b>
<b>2</b>	<b>Installing and configuring FileZilla Server .....</b>	<b>6</b>
2.1	Installing FileZilla Server .....	6
2.2	Configuring FileZilla Server .....	8
<b>3</b>	<b>Configuring and testing FTP Push of the Fronius Datamanager .....</b>	<b>12</b>

# 1 REQUIREMENTS

In order that you are able to load the data of your PV plant using the FTP Push function of the Fronius Datamanager to a local FTP server, the following requirements must be met:

- / You have good knowledge of Ethernet networks.
- / You have a PV plant to which a Fronius Datamanager is connected.
- / The Fronius Datamanager must be connected to an Ethernet network and be in operation.
- / You have access to the Webinterface of the Fronius Datamanager.
- / The Fronius Datamanager FTP Push function is not active.
- / You have writing access to the hard disk of your computer.

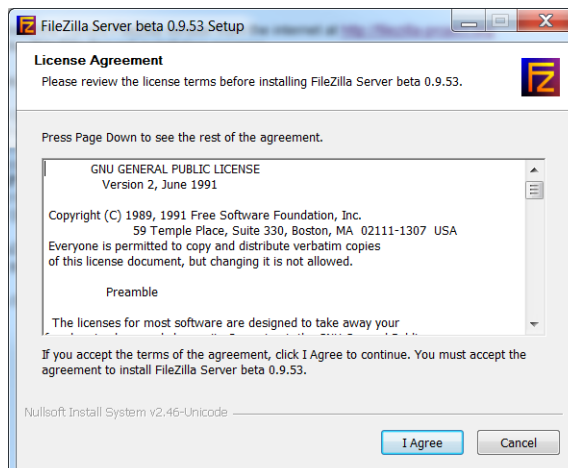
## 2 INSTALLING AND CONFIGURING FILEZILLA SERVER

### 2.1 Installing FileZilla Server

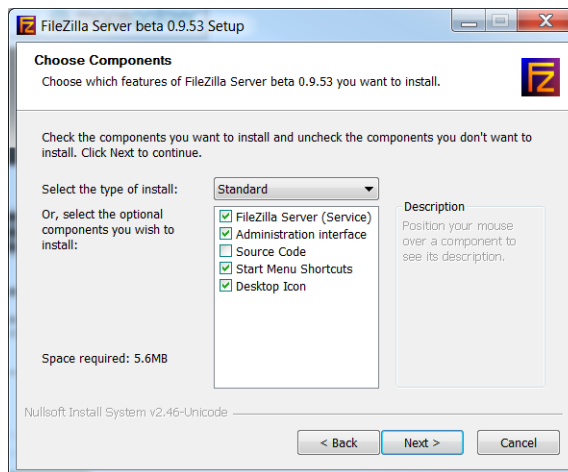
During the installation of an FTP server in the network you must meet safety precautions in order to protect the FTP server from unauthorized access by third parties. If you have questions regarding the security of your network, please contact your network administrator.

This guide is valid for the FileZilla Server version 0.9.31 beta. For later versions of the FileZilla Server the descriptions are probably similar and therefore recognizable. If you have questions regarding the installation and configuration of the FTP server, please contact your network administrator.

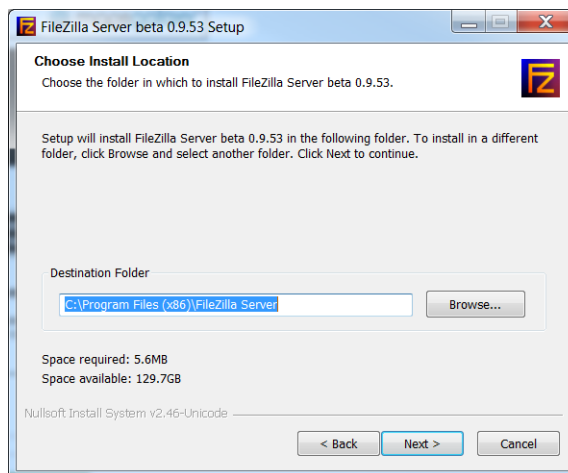
1. Download the current FileZilla version from the internet at <http://filezilla-project.org>
2. Start the "FileZilla Server" installation program.
- The "FileZilla Server" setup assistant starts.
3. Select [**I Agree**] to accept the licence agreement.



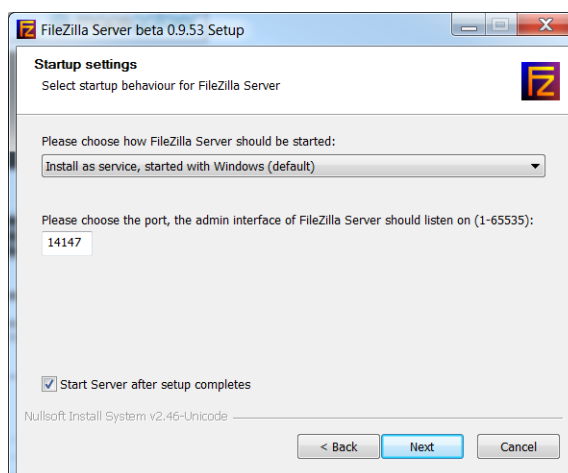
4. Select standard installation and select [**Next >**].



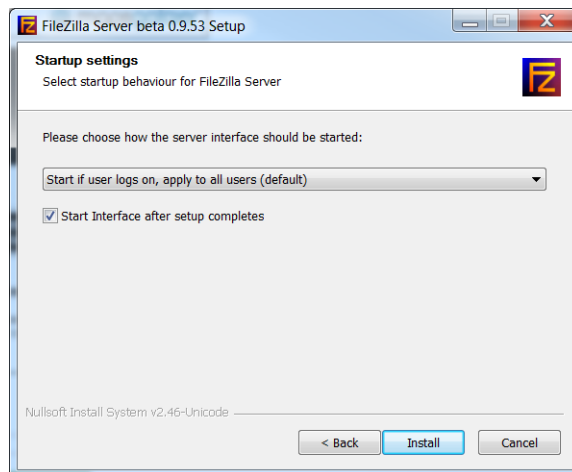
5. Select the directory to which the FileZilla Server program is to be installed and select [**Next >**]



6. Select the start mode "**Install as service, started with Windows (default)**" from FileZilla and enter the Port "**14147**". This value is preset as standard.

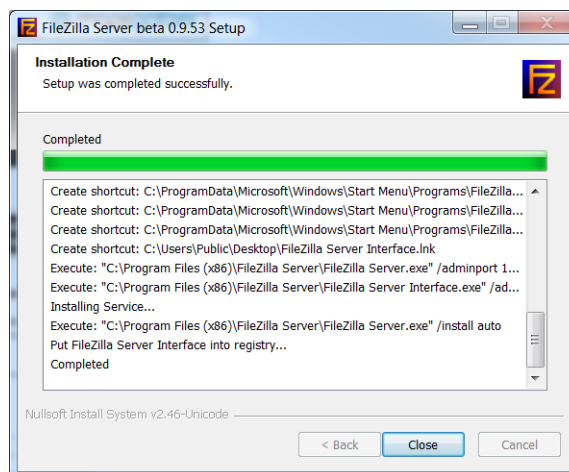


7. Select the start mode **"Start if user logs on, apply to all users (default)"** of the interface from the server and select **[install]**. This value is preset as standard.



- The FileZilla Server installation starts.

8. Once the installation is complete, select **[Close]**.

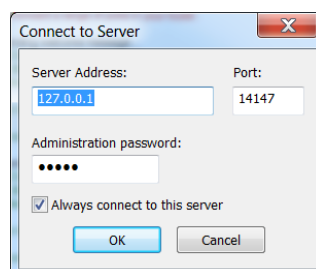


- FileZilla Server is installed.

## 2.2 Configuring FileZilla Server

1. Start **"FileZilla Server"**.

  - The **"Connect to Server"** window opens.



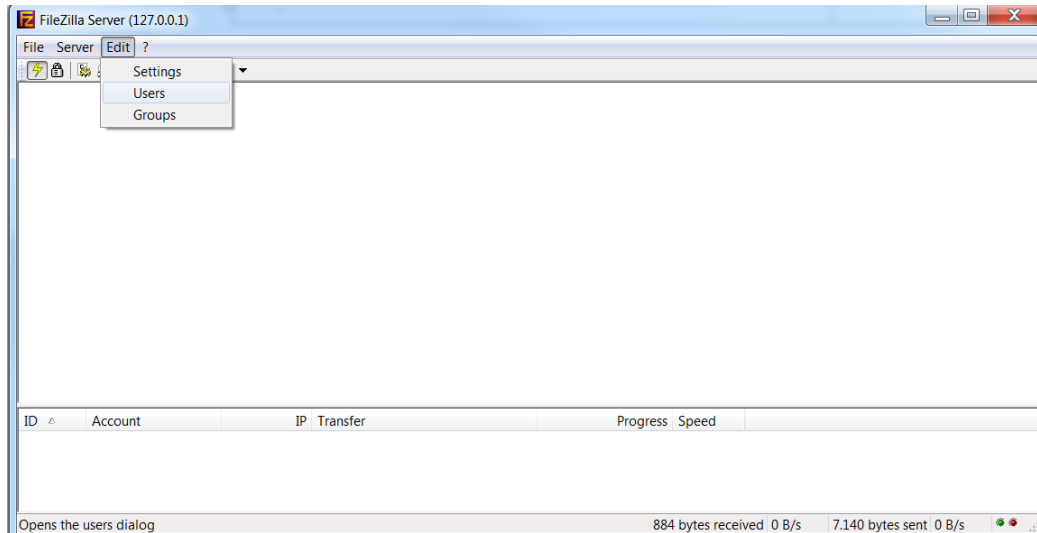


2. Enter the following into the "Connect to Server" window:

Field	Settings
"Server Address"	127.0.0.1
"Port"	14147
"Administration password"	Define the FTP server administrator password.

3. Select [OK].

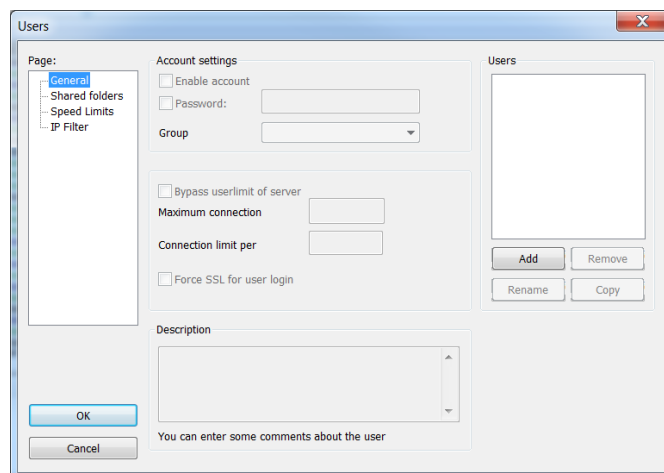
The main window of FileZilla Server opens.



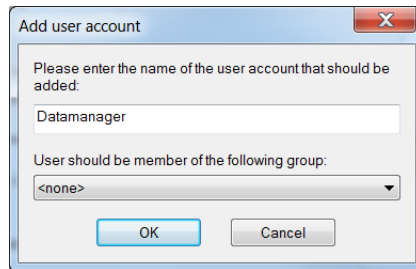
### Configuring a user account

4. Select "Edit > Users" in the main menu.

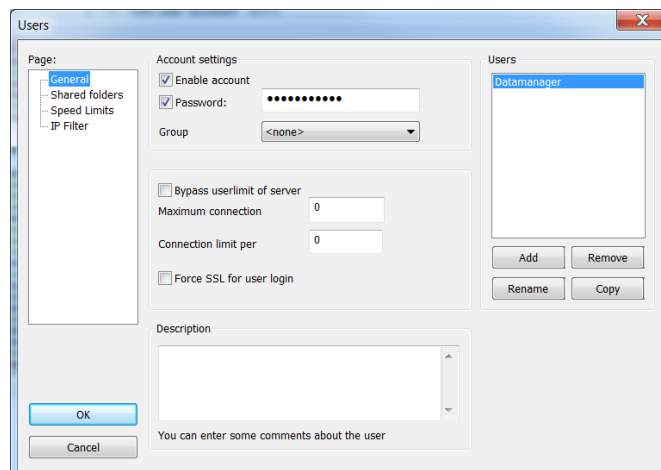
The "Users" window opens



5. In the "**Pages**" area, select "**General**".
  6. In the "**Users**" area, select [**Add**].
- The "**Add user account**" opens.

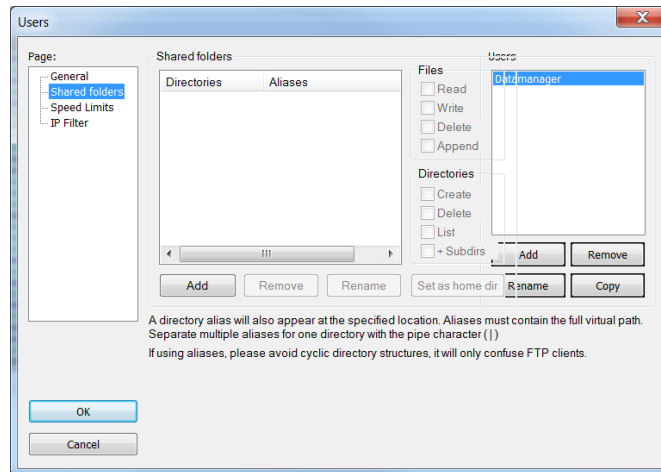


7. Enter the name "**Datamanager**" for the user account.
8. Select [**OK**].
9. In the "**users**" window under the area "**Account settings**" select the "**Enable account**" checkbox.
10. In the "**Password**" entry field, define a password with which the Fronius Datamanager will be logged into the FTP server.



## Configuring general storage for the FTP server

11. In the "Pages" area select the "Shared folders" sub-area.



12. In the "Shared folders" sub-area, select [Add].

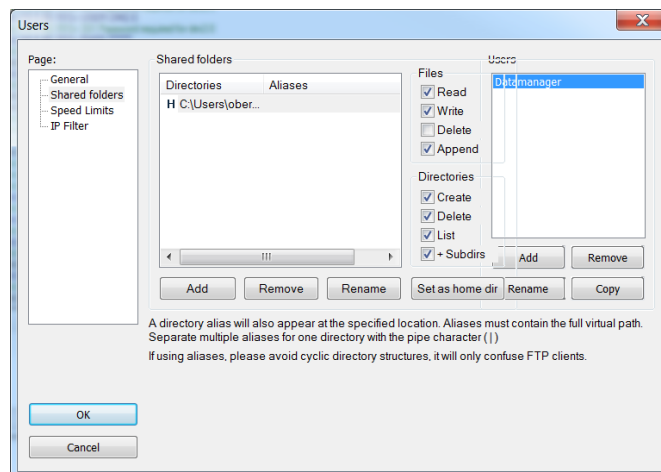
The "Folder search" window opens.

13. Select folder, under which the FTP server shall store the received data from the Fronius Datamanager.

14. In the "Directories" field, mark the selected folder and select "Set as home dir".

15. In the "Shared folders" area assign write-access and read-access for the folder you have just selected:

Area	Field	Settings
"Files"	"Read"	<input checked="" type="checkbox"/>
	"Write"	<input checked="" type="checkbox"/>
	"Delete"	<input type="checkbox"/>
	"Append"	<input checked="" type="checkbox"/>
"Directories"	"Create"	<input checked="" type="checkbox"/>
	"Delete"	<input checked="" type="checkbox"/>
	"List"	<input checked="" type="checkbox"/>
	" +Subdirs"	<input checked="" type="checkbox"/>

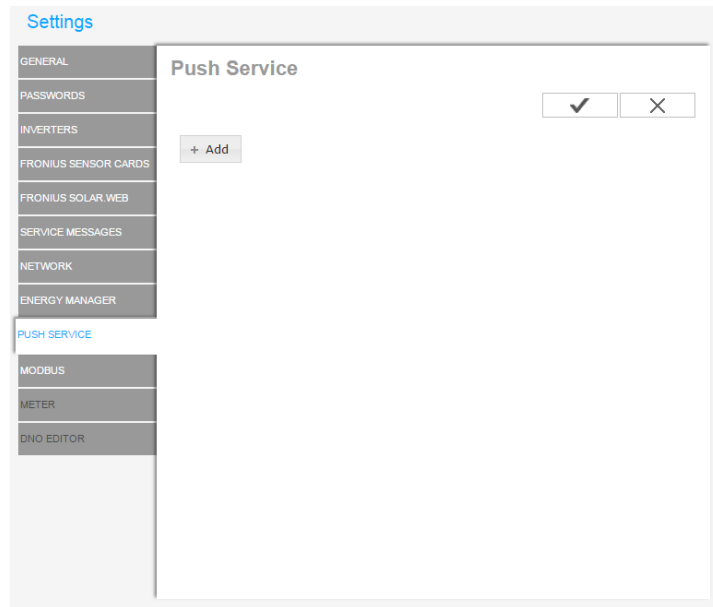


16. Select [OK].

The FTP server is configured and active. You can now configure and test the FTP Push function of the Fronius Datamanager.

# 3 CONFIGURING AND TESTING FTP PUSH OF THE FRONIUS DATAMANAGER

- 1. Enter the Webinterface of the Fronius Datamanager
- 2. Select "Settings > PUSH SERVICE" and „Add“ a new Service



▼ **New FTP Service 0** State: ---

Name:

Data format:  by

Interval:   activated

---

Server:Port:

Upload file name:

Login:

Proxy

- 3. Select the Data format which you want to receive  
(detailed information about the different formats → [http://www.fronius.com/cps/rde/xbcr/SID-1E234010-D630495/fronius\\_international/42\\_0410\\_2152\\_402156\\_snapshot.pdf](http://www.fronius.com/cps/rde/xbcr/SID-1E234010-D630495/fronius_international/42_0410_2152_402156_snapshot.pdf))
- 4. Enter the IP address and the Port of the computer on which the FileZilla Server is installed into the "Server:Port" field (e.g. 10.12.13.75:21).
- 5. Select "Login" and enter in the "User" field "Datamanager" and in the "Password" field your password.

Login:

User:

Password: